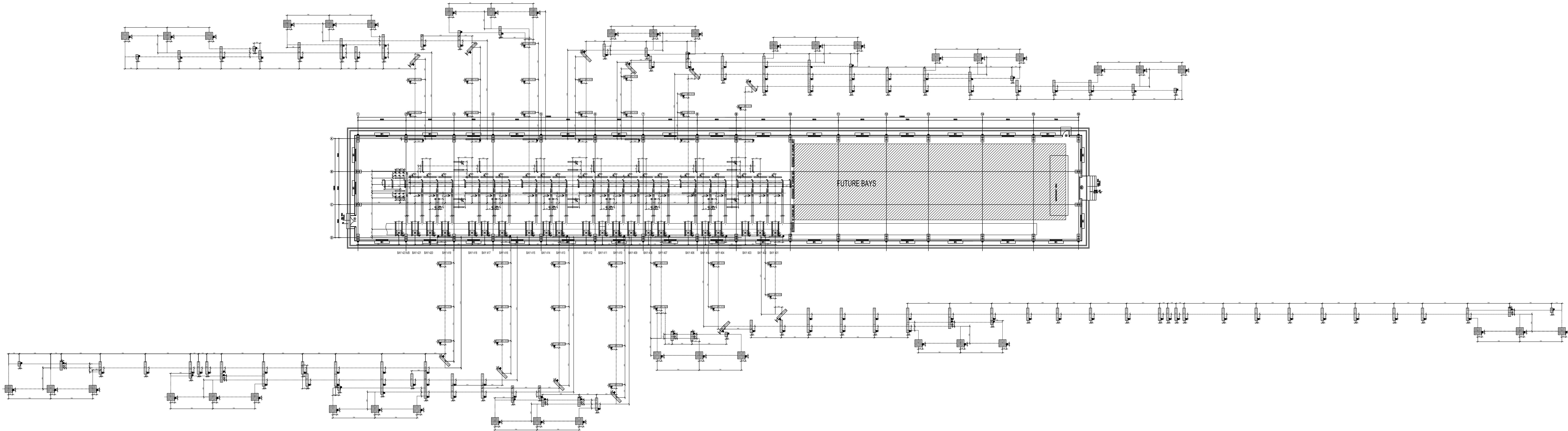


Foundat



Notes:

- 1.Orientation of foundation shall be verified with approved GIS layout drawing before casting at site.
- 2.This drawing is applicable for location of all foundation only.
- 3.The dimensions of the drawing are based on the center of main bus of the GIS equipment.
- 4.The thickness (≥15mm) of embedded steel marked on the drawing is only for reference.
- 5.If there isn't otherwise specified, all embedded steel should ensure the same level.
- 6.The maximum dimension of transportation unit:5.6m(length)x2.2m(width)x3.4m(height). The weight is about 8.5 tons. Considering the worst conditions, weight capacity of concrete floor should be taken into account.
- 7.The mark represents GIS grounding location. All the earthing point(Inside & Outside)should be connected to the main earthing mat supplied by the contractor. The size and position of earthing plate are displayed on the drawing. Earthing plate used for connecting GIS support to earthing point (inside and outside)is supplied by GIS.
- 8.The ground roughness meet the following requirements:
 - 8.1)the level deviation of embedded steel for whole arrangement is less than ±5mm.
 - 8.2)the level deviation doesn't exceed ±2mm for single embedded steel.
 - 8.3)the deviation doesn't exceed ±2mm for adjacent single embedded steel.
 - 8.4)the merger of adjacent embedded steel is accepted.
- 9.Only consider the load of installation and transportation, and other load (such as the weight of building structure)is not considered.
- 10.The duct entrance of the cable trench and it's dimensions should be marked on the drawing.
- 11.The dimensions of cross-section cable trench are marked on the drawing, and the turning of the right angle should be chamfered to make the cable casting smoothly.(Bevel angle:50°x45°)
- 12.The gate size of GIS Hall should not be less than 4000mmx6000mm (WidthxHeight) .
- 13.All the holes on the GIS room floor and wall will be plugged by the civil party after the equipment has been installed using soft material.
- 14.All dimension are mm otherwise specified.
15. Reserved earthing point, the material should be prepared by user. It should be reliably connected to earthing mat. The size can be determined by user, and should be not less than 100*100.

TABLE - 1 (Indoor)

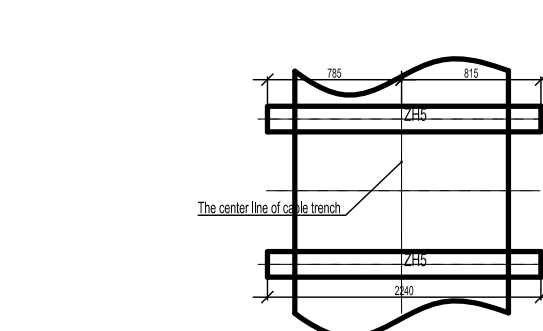
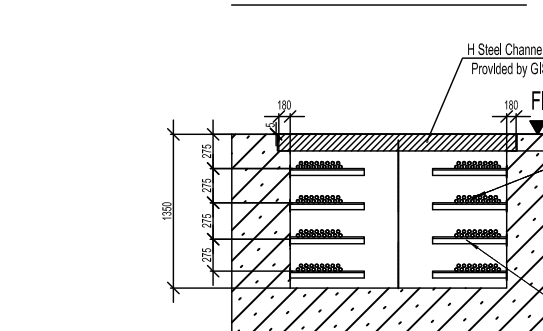
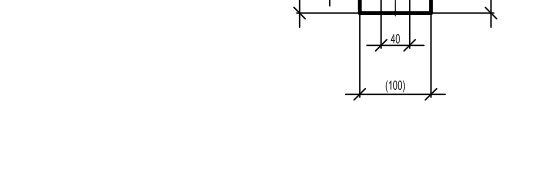
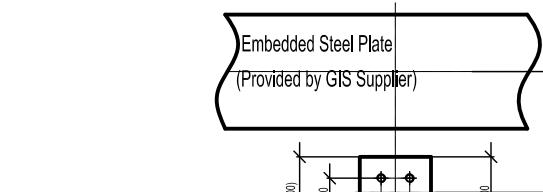
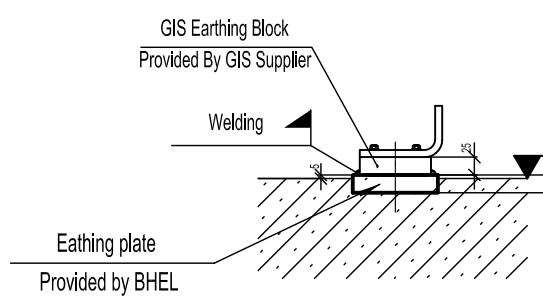
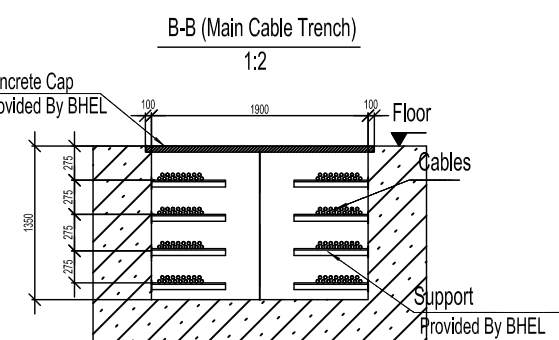
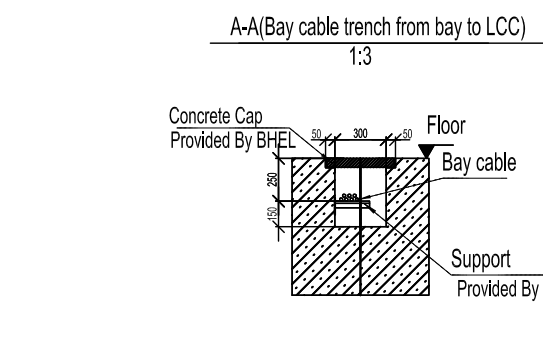
Location	Load position	Static load (kN)	Operation Load(kN)		Earthquake Load(kN)		Size	Remark
			Horizontal	Vertical	Horizontal	Vertical		
ZH1	Area	50.0	60.0	80.0	70.0	50.0	2000(L)x180(W)	For support of CB bay
ZH2	Area	15			20	15	1600(L)x180(W)	For support of busbar
ZH3	Area	5			10	5	1600(L)x180(W)	For support of PT bay
ZH4	Area	15			20	15	2000(L)x180(W)	For support of bus
ZH5	Area	5			10	5	2000(L)x180(W)	For support of LOC
ZH6	Area	5			10	5	1000(L)x180(W)	For support of service platform
ZH7	Area	15			20	15	2000(L)x180(W)	For support of busbar
ZH8	Area	15			20	15	2000(L)x180(W)	For support of busbar

TABLE - 2

Dimension	Position
Cable Exit	
IN1	800x800 EXIT FOR BAY CONTROL POWER CABLE

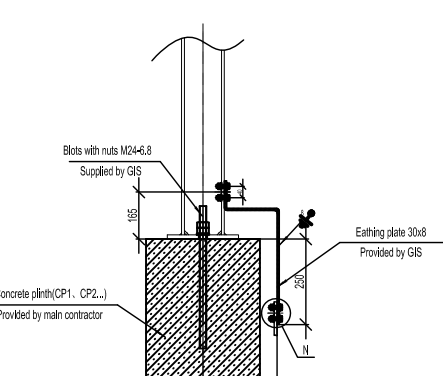
TABLE - 3 (Outdoor)

Location	Load position	Static load (kN)	Wind pressure Load(kN)		Earthquake Load(kN)		Concrete plate size - Indicate (LengthxWidth)
			Horizontal	Vertical	Horizontal	Vertical	
CP1	Area	10	30	20	12	10	2000x400
CP2	Area	10	30	20	12	10	2000x400
CP3	Area	10	36	36	12	10	2000x470
CP4	Area	8	20	20	10	8	1400x400
CP5	Area	5	15	15	8	5	740x400
CP6	Area	10	25	10	12	10	1200x1200
CP7	Area	20	60	40	24	20	4000x400
CP8	Area	15	50	36	20	18	3410x400
CP9	Area	15	40	30	16	15	2740x400



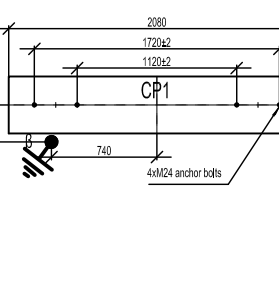
N
1:5

Support Fix and Earthing Point(Outdoor)



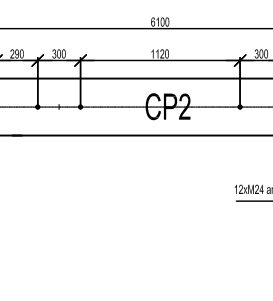
CP1 detail drawing

(Scale=1: 5)



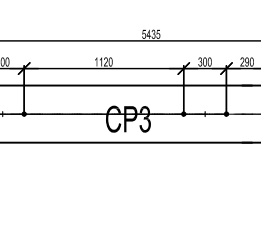
CP2 detail drawing

(Scale=1: 5)



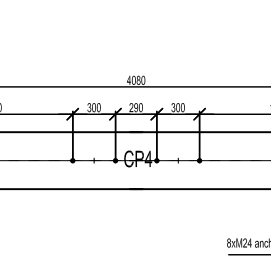
CP3 detail drawing

(Scale=1: 5)



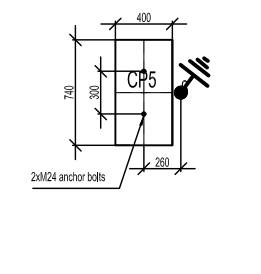
CP4 detail drawing

(Scale=1: 5)



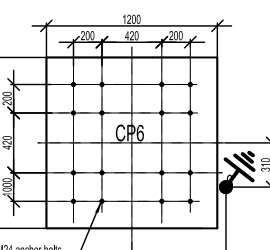
CP5 detail drawing

(Scale=1: 5)



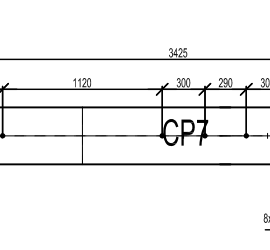
CP6 detail drawing

(Scale=1: 5)



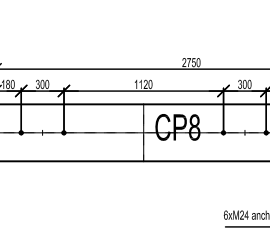
CP7 detail drawing

(Scale=1: 5)



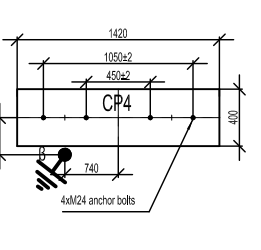
CP8 detail drawing

(Scale=1: 5)



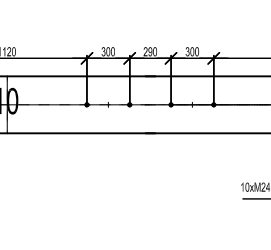
CP9 detail drawing

(Scale=1: 5)



CP7 detail drawing

(Scale=1: 5)



REV. DATE ALTERED CHECKED APPROVED

REV. DATE ALTERED CHECKED APPROVED

REV. DATE ALTERED CHECKED APPROVED

REV. DATE ALTERED CHECKED APPROVED

REV. DATE ALTERED CHECKED APPROVED

REV. DATE ALTERED CHECKED APPROVED

REV. DATE ALTERED CHECKED APPROVED

REV. DATE ALTERED CHECKED APPROVED

REV. DATE ALTERED CHECKED APPROVED

REV. DATE ALTERED CHECKED APPROVED

REV. DATE ALTERED CHECKED APPROVED

REV. DATE ALTERED CHECKED APPROVED

CA NO.	01/PVUNL-CS-9685-001-2/NOA-FC DATED 08/03/2018. 01/PVUNL-CS-9685-001-2/NOA-SC DATED 08/03/2018 & 01/PVUNL-CS-9685-001-2/NOA-TC DATED 08/03/2018		
ADDITIONAL INFORMATION W.O.No.	आह्वान/परियोजना का नाम PATRATU VIDYUT UTPADAN NIGAM LTD. PATRATU SUPER THERMAL POWER PROJECT EXPANSION PHASE-I (3x800 MW)		
STATUS OF DRAWING	NAME OF CUSTOMER/PROJECT		
DISTRIBUTION OF PRINTS	Bharat Heavy Electricals Limited Bharat Heavy Electricals Ltd. TRANSMISSION PROJECTS DIVISION		
REV. DATE ALTERED CHECKED APPROVED	विभाग DEPT. कोड CODE	उत्प्रेषण / SCALE	कार्ड कोड CARD CODE
REV. DATE ALTERED CHECKED APPROVED	VENDOR Siewan Electric Co., Ltd.		पुनः/REV. 00
डा.क.क./DRAWING NO. 9685-001-572-PVE-U-0286 INTEL DRG NO. TB-397-316-GIS-014 पृष्ठ क्र./SHEET No. 01 कुल पृष्ठ /NEXT SHEET --			